

Addendum 1

Request for Qualifications Strategic Plan Area of Focus: Lower Boardman River Pre-Application Meeting October 31, 2018

A Pre-Application meeting for the Strategic Plan Area of Focus: Lower Boardman River Request for Qualifications was held on October 31, 2018 at 10 am. A review of the RFQ was presented, and questions and answers were as follows.

Q. Were the working vision statements developed by the Leadership Team?

- A. Yes, through public meetings and also through the recent Water Trail project. The term “working” is used due to the Team intending to have the vision statements better developed through this process with the public. The focus is to have a process where “planning” would lead to “engineering” and not vice versa.

Q. Does this work plan want to look at the river from a land use perspective as well set-backs, etc.?

- A. *The Team intends to address these items in the process. Seeking public policy recommendations such as Zoning, a component on how development and engagement with the river will happen, are all a priority. A focus is how land will used at not only public, but private parcels.*

Q. Anticipated schedule through Phase 1?

- A. *Looking for the submissions to flush out the process and budget. Emphasis on quality rather than time.*

Q. Is there market data on land in the corridor.

- A. *There currently no market studies along the corridor. Current and potential investment values to the parcels along the corridor would be a preferred component for the RFQ submissions.*

Updated Interview Dates:

Selected Consultants will be interviewed on December 5th and 6th, 2018

RFQ Updates:

Maps of parcels along the river, tree canopy and infrastructure are enclosed.

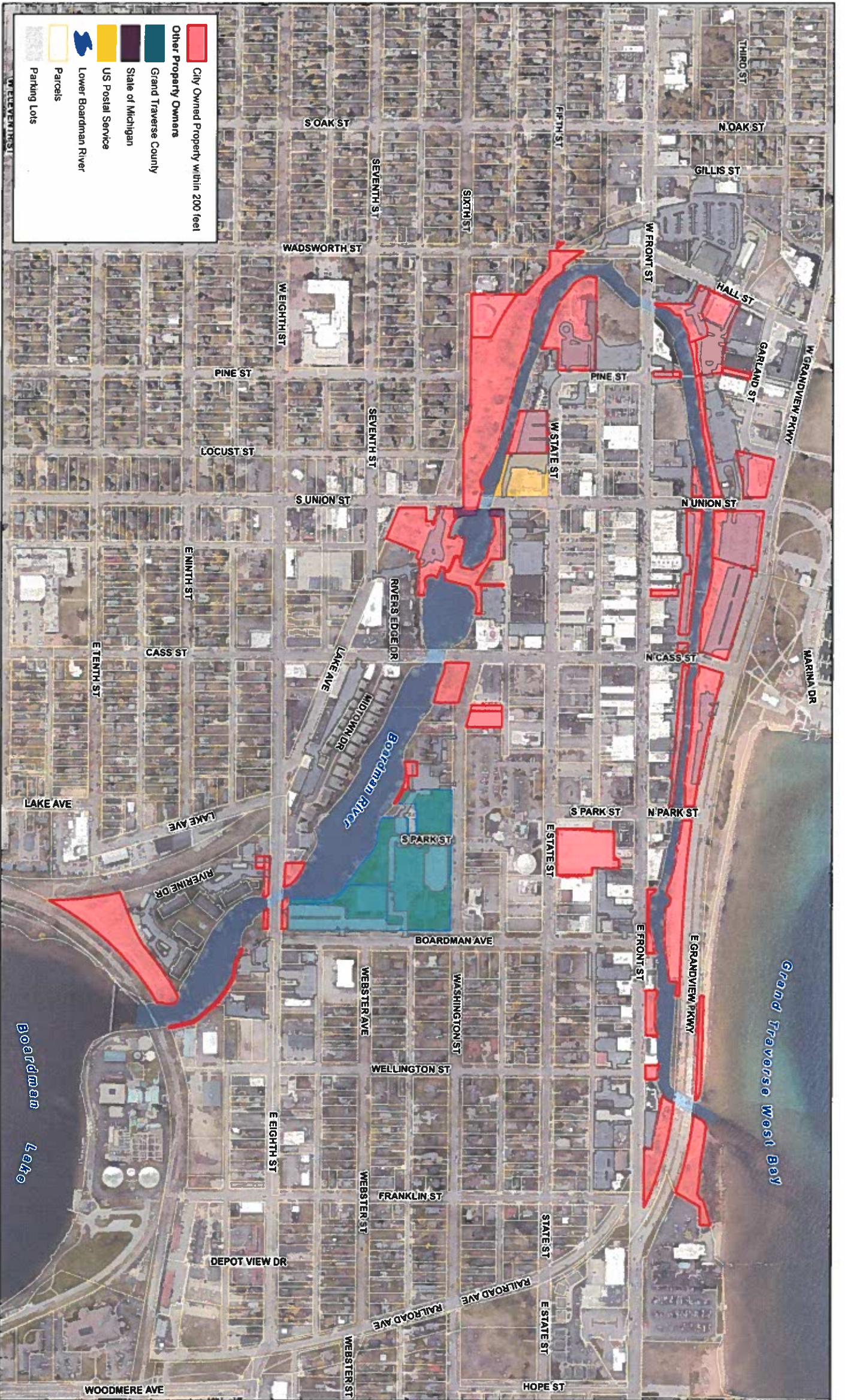


TRAVERSE CITY
 1000 WEST FRONT STREET
 TRAVERSE CITY, MI 49782
 PHONE: 231.947.2000
 FAX: 231.947.2001
 WWW.TRAVERSEMI.COM

LOWER BOARDMAN OVERVIEW MAP
 CITY OWNED PROPERTY - TREE COVERAGE

CITY OF TRAVERSE CITY,
 MICHIGAN





TRAVERSE CITY

LOWER BOARDMAN OVERVIEW MAP
CITY OWNED PROPERTY



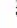



CITY OF TRAVERSE CITY,
MICHIGAN



1 INCH = 400 FEET
9-7-2018 GWS

FILE NAME: 8 PARKS.DWG, DATE: 9/14/2018
DRAWN BY: JACOB ANDERSON
CHECKED BY: JACOB ANDERSON
DATE: 9/14/2018



	Sewer Gravity Mains
	Sewer Pressurized Mains
	City Owned Property within 200 feet
	Lower Boardman River
	Parcels
	Parking Lots



THIS MAP IS BASED ON DIGITAL DATA FROM THE CITY OF TRAVERSE CITY. THE CITY OF TRAVERSE CITY ASSUMES NO LIABILITY FOR ANY ERRORS OR OMISSIONS. THE CITY OF TRAVERSE CITY IS NOT RESPONSIBLE FOR ANY DAMAGES, INCLUDING BUT NOT LIMITED TO, CONSEQUENTIAL DAMAGES, ARISING FROM THE USE OF THIS MAP.

**LOWER BOARDMAN OVERVIEW MAP
CITY OWNED PROPERTY - SEWER UTILITIES**

CITY OF TRAVERSE CITY,
MICHIGAN



1" = 21.4 FEET
9/7/2016 GWS