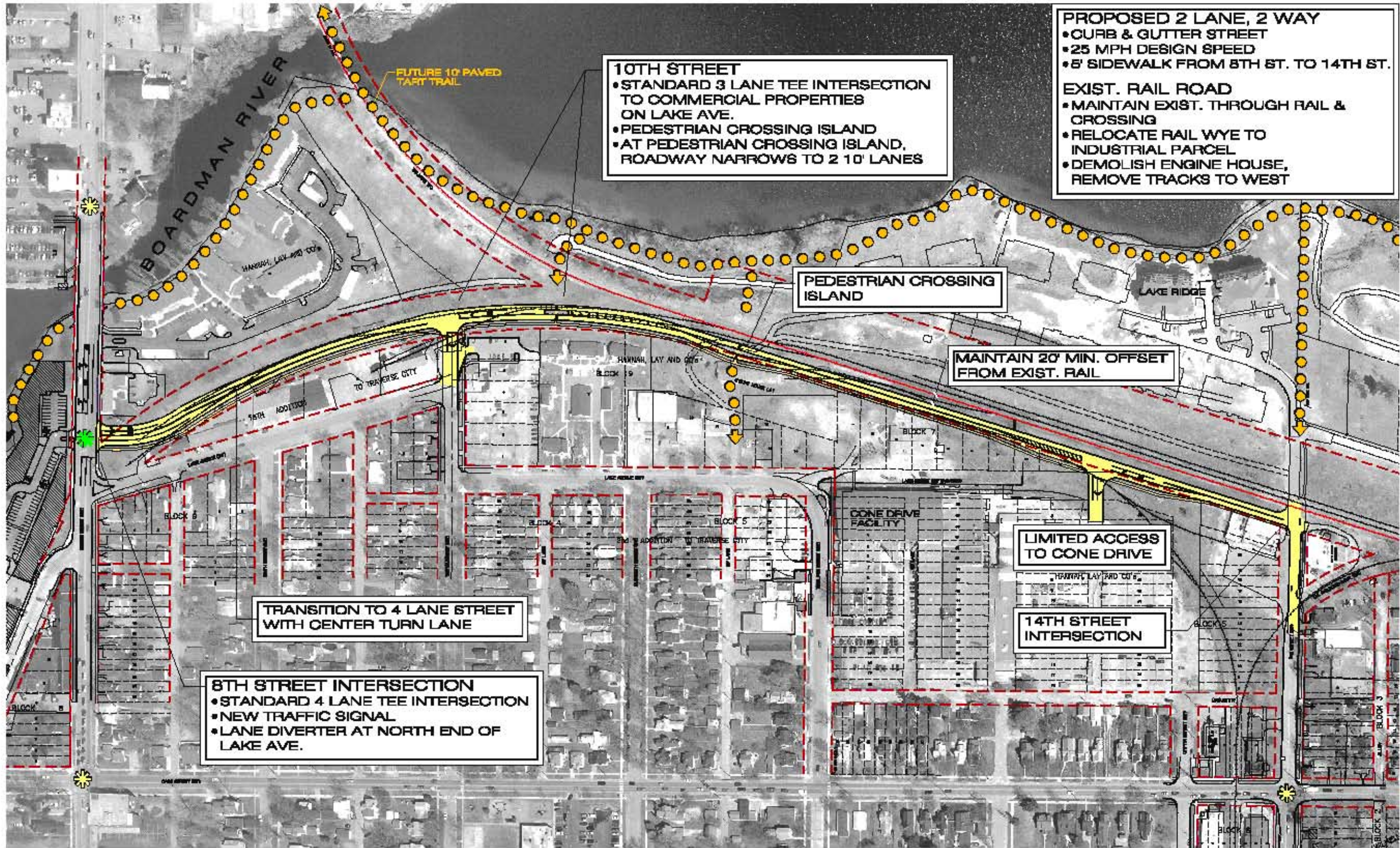


Boardman Lake Avenue Corridor - Northwest Section Gourdie-Fraser



PROPOSED 2 LANE, 2 WAY

- CURB & GUTTER STREET
- 25 MPH DESIGN SPEED
- 5' SIDEWALK FROM 8TH ST. TO 14TH ST.

EXIST. RAIL ROAD

- MAINTAIN EXIST. THROUGH RAIL & CROSSING
- RELOCATE RAIL WYE TO INDUSTRIAL PARCEL
- DEMOLISH ENGINE HOUSE, REMOVE TRACKS TO WEST

10TH STREET

- STANDARD 3 LANE TEE INTERSECTION TO COMMERCIAL PROPERTIES ON LAKE AVE.
- PEDESTRIAN CROSSING ISLAND
- AT PEDESTRIAN CROSSING ISLAND, ROADWAY NARROWS TO 2 10' LANES

PEDESTRIAN CROSSING ISLAND

MAINTAIN 20' MIN. OFFSET FROM EXIST. RAIL

TRANSITION TO 4 LANE STREET WITH CENTER TURN LANE

8TH STREET INTERSECTION

- STANDARD 4 LANE TEE INTERSECTION
- NEW TRAFFIC SIGNAL
- LANE DIVERTER AT NORTH END OF LAKE AVE.

LIMITED ACCESS TO CONE DRIVE

14TH STREET INTERSECTION