



Jerry Swanson  
GIS Coordinator

# GIS Division: 2020 Annual Report

Geographic Information System (GIS) integrates spatial data (maps) and tabular data (relational databases) through technology



Tax Parcel Viewer:  
collaboration with City Assessor

## BY THE NUMBERS

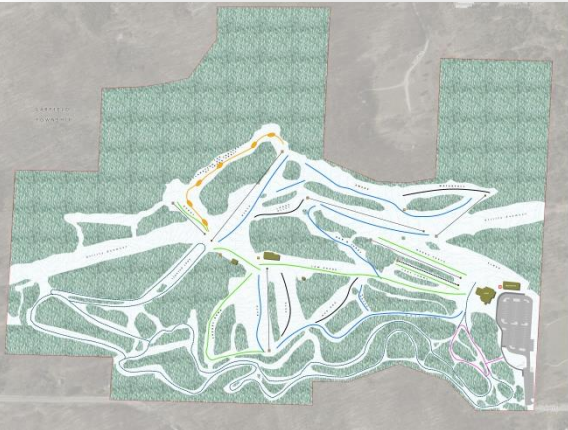
- 177 Data Layers
- 118 Internal Data Requests
- 28 External Data Requests
- 26 City Staff Data Viewers
- 7 Public Facing Interactive Maps
- 4 Data Editors



Traverse City GIS (TCGIS) manages various datasets within the city's jurisdiction including tax parcels, street centerlines, imagery, utility data, planning and zoning layers and strives to maintain accurate data to increase efficiency, save time, and inform decisions makers. TCGIS also assists the public to view and access various data from interactive web maps along with digital and paper maps.

## YEAR HIGHLIGHTS

- ❖ Collection of 1000+ data points at Hickory Hills
- ❖ Launched a Public Facing Interactive Zoning Map
- ❖ Launched a City Parks Locator Interactive Map



TCGIS utilizes GIS servers to share spatial data across numerous platforms including web maps, tablets, smart phones and desktop applications. As the City adapts to changing technology, TCGIS is deploying more user friendly solutions to both City Staff and the public.



CITY of  
**TRAVERSE CITY**  
Geographic Information Systems

