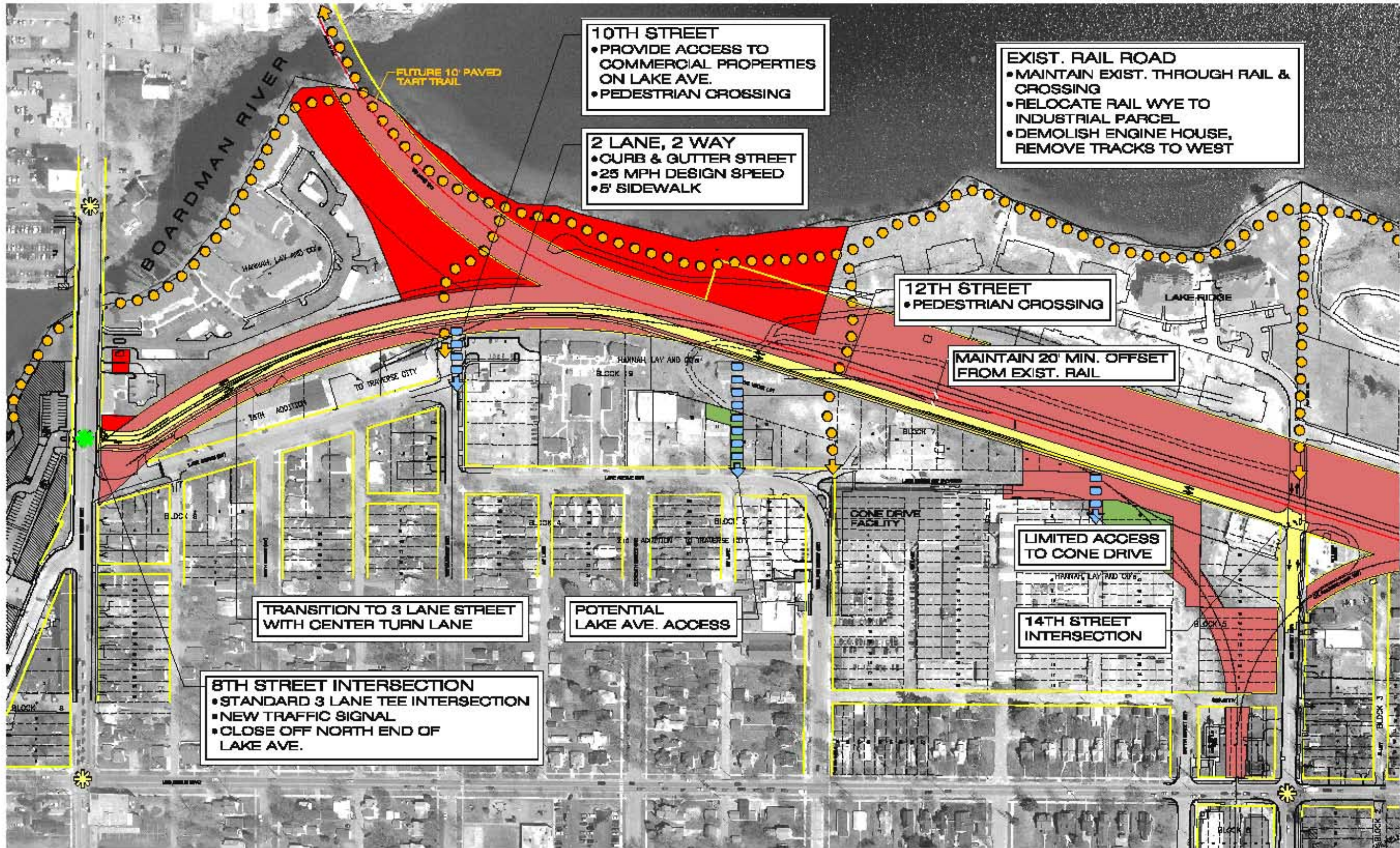


Boardman Lake Avenue Corridor - Northwest Section Gourdie-Fraser



10TH STREET
 • PROVIDE ACCESS TO COMMERCIAL PROPERTIES ON LAKE AVE.
 • PEDESTRIAN CROSSING

2 LANE, 2 WAY
 • CURB & GUTTER STREET
 • 25 MPH DESIGN SPEED
 • 8' SIDEWALK

EXIST. RAIL ROAD
 • MAINTAIN EXIST. THROUGH RAIL & CROSSING
 • RELOCATE RAIL WYE TO INDUSTRIAL PARCEL
 • DEMOLISH ENGINE HOUSE, REMOVE TRACKS TO WEST

12TH STREET
 • PEDESTRIAN CROSSING

MAINTAIN 20' MIN. OFFSET FROM EXIST. RAIL

TRANSITION TO 3 LANE STREET WITH CENTER TURN LANE

POTENTIAL LAKE AVE. ACCESS

LIMITED ACCESS TO CONE DRIVE

14TH STREET INTERSECTION

8TH STREET INTERSECTION
 • STANDARD 3 LANE TEE INTERSECTION
 • NEW TRAFFIC SIGNAL
 • CLOSE OFF NORTH END OF LAKE AVE.