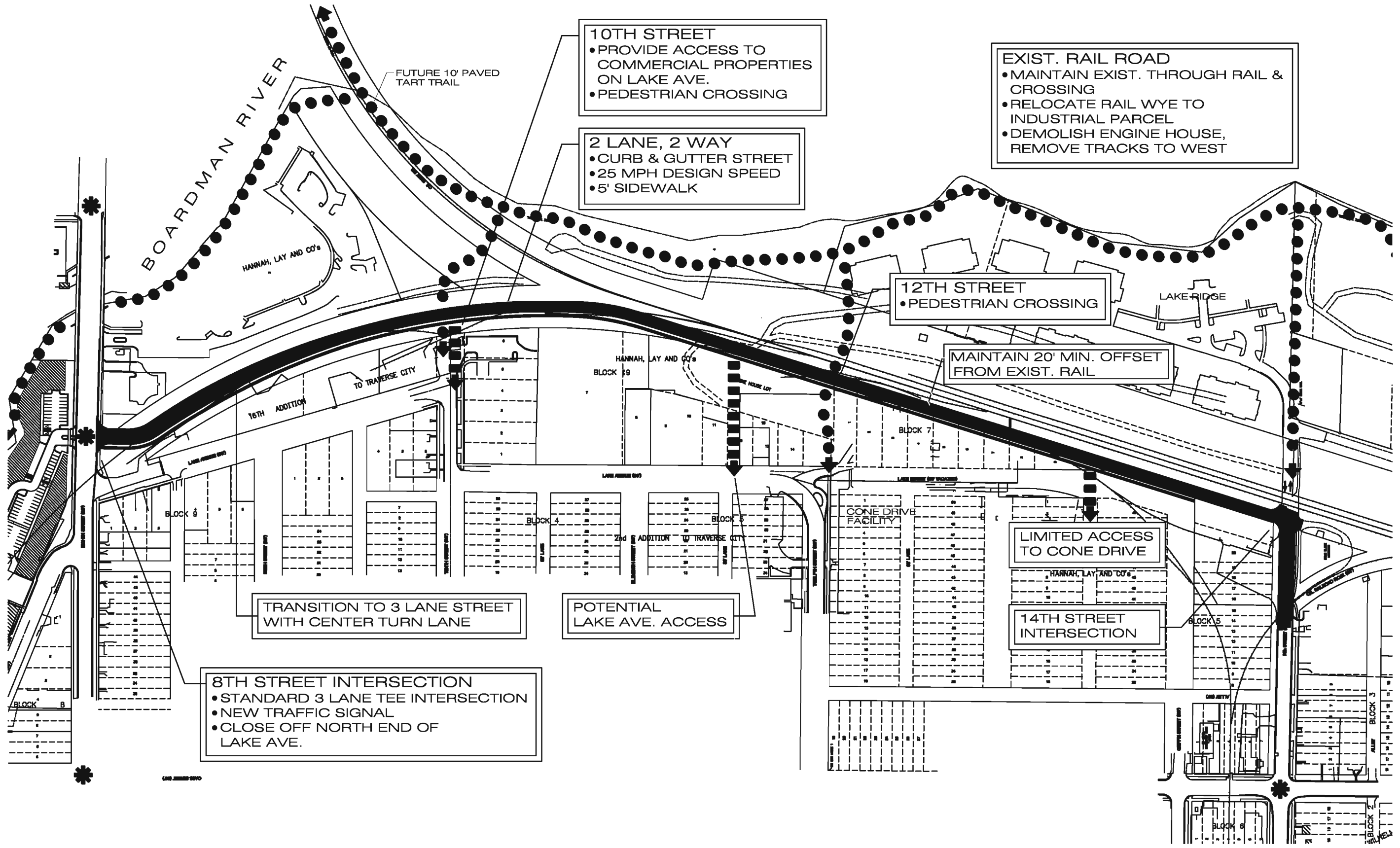


Boardman Lake Avenue Corridor - Northwest Section Gourdie-Fraser



10TH STREET

- PROVIDE ACCESS TO COMMERCIAL PROPERTIES ON LAKE AVE.
- PEDESTRIAN CROSSING

2 LANE, 2 WAY

- CURB & GUTTER STREET
- 25 MPH DESIGN SPEED
- 5' SIDEWALK

EXIST. RAIL ROAD

- MAINTAIN EXIST. THROUGH RAIL & CROSSING
- RELOCATE RAIL WYE TO INDUSTRIAL PARCEL
- DEMOLISH ENGINE HOUSE, REMOVE TRACKS TO WEST

12TH STREET

- PEDESTRIAN CROSSING

MAINTAIN 20' MIN. OFFSET FROM EXIST. RAIL

TRANSITION TO 3 LANE STREET WITH CENTER TURN LANE

POTENTIAL LAKE AVE. ACCESS

LIMITED ACCESS TO CONE DRIVE

14TH STREET INTERSECTION

8TH STREET INTERSECTION

- STANDARD 3 LANE TEE INTERSECTION
- NEW TRAFFIC SIGNAL
- CLOSE OFF NORTH END OF LAKE AVE.