

## **ADDENDUM NO. 1**

### **TO SPECIFICATIONS AND PLANS FOR THE CITY OF TRAVERSE CITY**

#### **WEST END BEACH PARKING LOT REPAIR AND MDNR GRANT #TF22-0162 BATHROOMS PROJECT**

BIDS DUE: Thursday, March 6, 2025 10:00AM

ISSUED: February 13, 2025

This Addendum is issued prior to receipt of bids to provide for certain changes and clarifications to the Specifications and/or the Drawings, as herein specified, and is hereby made a part of the Contract Documents and shall be taken into consideration in preparing the Proposal. All other conditions remain the same.

Receipt of this addendum must be noted in the place provided on the Bid Form and dated February 13, 2025

ADDENDUM:

#### **PLAN CLARIFICATIONS:**

1. The pay items “Embankment, LM” and “Aggregate Base, LM” and approximate quantities shown on sheet 3 of 9 are provisional in case they are needed to build up the subbase and/or gravel base under the eroded portion of the parking lot in the northwest quadrant. The existing conditions under this area of the parking lot are unknown. They may be used as directed by the Engineer.
2. Question: *In the Northeast corner of the project on the removal sheet it calls out to remove structure 3266. However, on the construction sheet where the Sewer Tap 12” is placed there is a casting located there. Are we looking to remove the structure as called out then plumb into the mainline with a concrete encasement, and therefore eliminate the need for a casting?*  
Answer: CB-3266 shown on sheet 2 will be removed and the casting will be salvaged for reuse on CB-A. The casting symbol at the CB-3266 location on sheet 3 is a plan error and has been removed. The new sewer from CB-A will be connected to the existing CPE sewer at the CB-3266 location with a concrete encasement and paid as “Sewer Tap, 12 inch”
3. Question: *For the pipe that is getting laid it calls for 40’ of CL E pipe. However the inverts for both locations call out CPE. Will this run need to be concrete or CPE?*  
Answer: The proposed storm sewer material shall be CL E concrete. The invert call out for CB-A has been corrected.
4. Question: *For CB-A will the top that is set on the structure need to be a flat top or slope cone?*  
Answer: The preferred shape is a slope cone to accommodate the slope of the riprap.

5. Question: *Can clarification be provided on where the thickened edge included as Sidewalk, Conc, 6 inch is located. It calls it out on the construction sheet where the pad bench is located. However on the quarried rock steps detail the stones come off of a thickened edge. Does the thickened edge run along the entire North side of the sidewalk?*  
Answer: The thickened edge will be constructed along the north edge of the sidewalk from the parking lot to the bench pad and as shown in the Quarried Rock Steps detail. This will be included in pay item "Sidewalk, Conc, 6 inch"
6. Question: *Will the Curb and Gutter that is being placed need to be placed on an aggregate base or does a sand base suffice?*  
Answer: The preference is placing the curb on an aggregate base but existing condition may require a sand base using the pay item "Embankment, LM" if additional material is needed. The Engineer will provide direction in the field.

### **PLAN CHANGES:**

1. Sheet 3
  - a. Added Granular Material, CI II to slope restoration area.
  - b. Casting symbol at CB-3266 location has been removed.
  - c. Added note clarifying extents of thickened edge sidewalk.
2. Sheet 5
  - a. Added Granular Material, CI II to slope restoration detail. The sand will be used to supplement the riprap to provide a void free (as much a practical) slope.
  - b. Called out Geotextile, Separator, Non-Woven, Modified material under the Quarried Rock Steps in the detail.

### **SPECIFICATION CHANGES:**

1. Revised the attached special provision for Gravel Foundation and Facility Construction dated 02-11-2025.
  - a. Added the following requirement: The gravel foundations for Location #1 (West End Beach) and Location #2 (Lot RB) shall be ready for delivery and placement of the facilities at the same time to accommodate the facility manufacturer. CXT will be making one trip to Traverse City to place both bathrooms.
  - b. Changed the contact for CXT

### **SPECIFICATION ADDITIONS:**

1. Added the attached special provision for Geotextile, Separator, Non-Woven, Modified (01-13-2025) to the project specifications. This material must be used as shown in the Slope Restoration and Quarried Rock Steps details and will not be paid for separately.

### **BID FORM:**

1. See attached revised bid form.
  - a. Added Granular Material, CI II, 15 CYD to Location #1.

All other conditions of this Invitation for Bids remain the same.

Bidders must acknowledge receipt of this amendment. Acknowledgement must be shown in the spaces provided herein or on the bid form in the Invitation for Bids, and must be receipted before the time set for receiving bids, **Thursday, March 6, 2025, 10:00 am** local time, at the place of bid opening at the office of **The City Engineer, 400 Boardman Avenue, Traverse City, MI. 49684.**

FAILURE TO ACKNOWLEDGE RECEIPT OF THIS AMENDMENT WILL CAUSE REJECTION OF BID.

Dated: \_\_\_\_\_

Sincerely,



Alexander R. Yockey, PE  
Deputy City Engineer

ACKNOWLEDGED:

Bidder: \_\_\_\_\_

By: \_\_\_\_\_

Title: \_\_\_\_\_

# CITY OF TRAVERSE CITY

## REVISION OF SECTIONS 301 AND 302 SUBBASE AGGREGATE BASE COURSE

TC:ARY

1 of 2


02-11-2025

Sections 301 and 302 of the Standard Specifications is hereby revised for this project as follows:

Sections 301 and 302 shall include the following:

**a. Description.** This work consists of providing all materials, labor and equipment necessary to complete the facility gravel foundation in accordance with Section 301 and 302 of the Standard Specifications as modified herein. The gravel foundation and associated work items described in this special provision are required to prepare the site for placement of a pre-fabricated bathroom facility. The delivery and placement of the facility on the prepared foundation will be by others.

**b. Materials.** Aggregate material for the gravel foundation shall be MDOT 25A Special in accordance with the following specification or Engineer approved equal.

TEAM 

Testing Lab.  
3600 Rennie School Rd.  
Traverse City, MI 49696

[Main Page](#)

Date	05/19/20	Test Number	3	
Material	25A SPECIAL			
Location	M-72			
WET WT. OF SAMPLE			Pit #	45-038
DRY WT. OF SAMPLE	3453.6	% MOISTURE		
WASHED WT. OF SAMPLE	3120.8	% L.B.W.	9.6	
CRUSH PICK WEIGHT	1947.2	% Crushed	99.4	
		Fineness Modulus	4.96	

SIEVES		WT. GRAMS	%RETAINED	% RETAINED	% PASSING	SPEC
3"	75	0.0	0.0	0.0	100.0	Targets
1"	25.0	0.0	0.0	0.0	100.0	
3/4"	19.0	0.0	0.0	0.0	100.0	100.0
1/2"	12.5	271.9	7.9	7.9	92.1	
3/8"	9.5	615.5	17.8	25.7	74.3	
No 4	4.75	1070.6	31.0	56.7	43.3	
No 8	2.36	489.5	14.2	70.9	29.1	
No 16	1.18	263.8	7.6	78.5	21.5	
No 30	0.600	151.2	4.4	82.9	17.1	
No 50	0.300	99.3	2.9	85.8	14.2	
No 100	0.150	66.4	1.9	87.7	12.3	
No 200	0.075	58.3	1.7	89.4	10.6	
Pan		34.3	1.0	90.4		
LBW		332.8			9.6	
TOTAL		3453.6				

Comments: STOCK PILED

**c. Construction.** Excavate the existing soil to the elevations shown on the plans. Prepare the subbase with compaction in accordance with Section 301 and as specified herein.

The gravel foundation for the facility must extend beyond the facility floor by 2 feet in each direction. The below floor portions of the water, sanitary sewer, and power services must be

constructed and stubbed up before the gravel is placed and compacted. The locations of the stubs shall be in the blockout locations shown on the facility drawings.

The gravel shall be placed level and compacted in lifts not to exceed 6 inches. Compact each layer of gravel to at least 98% of the maximum unit weight. The thickness of the gravel foundation shall not be less than 42 inches. Shape and compact the finished surface to within ½ inch of the elevation shown on the plans. The foundation material shall be confined to prevent washout erosion or any other undermining.

**The gravel foundations for Location #1 (West End Beach) and Location #2 (Lot RB) shall be ready for delivery and placement of the facilities at the same time to accommodate the facility manufacturer. CXT will be making one trip to Traverse City to place both bathrooms.**

Coordinate and facilitate delivery and site access with the facility manufacturer, CXT. Provide CXT a 30-day advanced notice for delivery.

CXT Incorporated  
Austin Allen, Field Operations Manager  
606 N. Pines Road, Suite 202  
Spokane Valley, WA 99206  
509-892-3240  
[aallen@lbfooster.com](mailto:aallen@lbfooster.com)

Contractor shall be onsite to assist when facility is delivered and set.

**d. Measurement and Payment.** The completed work, as described, will be measured and paid for at the contract unit price using the following pay items:

Pay Item	Pay Unit
Gravel Foundation and Facility Coordination .....	Ea
Excavation and disposal of existing soil will be paid for separately.	
Water, Sanitary Sewer and Power services will be paid for separately.	

CITY OF TRAVERSE CITY

REVISION OF SECTION 308  
GEOSYNTHETICS FOR BASE

TC:ARY

1 of 1

01-13-2025

Section 308 of the Standard Specifications is hereby revised for this project as follows:

Section 308 shall include the following:

**a. Description.** This work consists of furnishing, placing and anchoring the geotextile separator in accordance with the standard specifications, except as herein modified.

**b. Materials.** Provide a separator that is all natural and free of chemical additives. Ensure the material and staking products are 100 percent biodegradable and manufactured with non-plastic materials. Degradable, photodegradable, UV-degradable, oxo-degradable, or oxo-biodegradable plastic netting including polypropylene, nylon, polyethylene and polyester are not acceptable alternatives.

The separator shall be Western Excelsior Excel CC-4 All Natural RECP or approved equal.

Materials referenced in Section 910, MDOT Material Source Guide, and Qualified Product Lists for geotextile separator shall not be allowed unless 100% all natural and approved by the Engineer.

**c. Construction.** Construct in accordance with section 308 of the Standard Specifications for Construction and the manufacturer's published instructions modified for use as a geotextile separator.

**d. Measurement and Payment.**

Geotextile, Separator, Non-Woven, Modified is included in pay items **Riprap, Spec, CL II** and **Quarried Rock Steps** and will not be paid for separately.

# MATERIAL PROPERTY DATA SHEET



## EXCEL CC-4 All Natural™

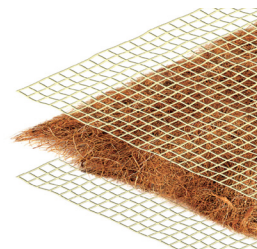
Long Term • Double Net • Coconut Matrix •  
Biodegradable • Erosion Control Blanket

### DESCRIPTION

Excel CC-4 All Natural (CC-4AN) Long Term Erosion Control Blanket consists entirely of coconut fibers manufactured into a matrix of uniform thickness and coverage. The coconut matrix is confined by a biodegradable, jute/scrim net on top and bottom, mechanically (stitch) bound on two-inch centers with a biodegradable thread. Excel CC-4AN is intended for slope and channel erosion control applications requiring up to thirty-six months of functional longevity. The material is fully degradable. The net, thread, and the fiber matrix is biodegradable. Actual field longevity is dependent on soil and climatic conditions.

Each roll of Excel CC-4AN is made in the USA and manufactured under Western Green's Quality Assurance Program to ensure a continuous distribution of fibers and consistent thickness.

*CC-4AN has replaced ECC-2B, formerly provided by East Coast Erosion. CC-4AN meets or exceeds the ECC-2B and can be used as a replacement with no limitations.*



Material Content	
Matrix	Coconut
Netting	Top Net: Jute Scrim, Biodegradable, Leno Weave Bottom Net: Jute Scrim, Biodegradable, Leno Weave
Thread	Biodegradable Cotton or Rayon

Standard Roll Sizes			
Width	8 ft (2.4 m)	16 ft (4.9 m)	
Length	112 ft (34.1 m)	563 ft (171.0 m)	
Weight ± 10%	56.3 lb (25.6 kg)	563 lb (256.0 kg)	
Area	100 sy (83.6 m <sup>2</sup> )	1000 SY (836.0 m <sup>2</sup> )	

*Material available in custom roll sizes*

Approvals & Classification	
Classification	FHWA: 4.B / ECTC: 4.B
TTI Approvals	Type B, D
NTPEP Number	ECP-2020-01-011

Disclaimer: The information contained herein may represent product index data, performance ratings, bench scale testing or other material utility quantifications. Each representation may have unique utility and limitations. Every effort has been made to ensure accuracy, however, no warranty is claimed and no liability shall be assumed by Western Green or its affiliates regarding the completeness, accuracy or fitness of these values for any particular application or interpretation. While testing methods are provided for reference, values shown may be derived from interpolation or adjustment to be representative of intended use. For further information, please feel free to contact Western Green.

©2022, Western Excelsior is a registered trademark from Western Green. Certain products and/or applications described or illustrated herein are protected under one or more U.S. patents. Other U.S. patents are pending, and certain foreign patents and patent applications may also exist. Trademark rights also apply as indicated herein. Final determination of the suitability of any information or material for the use contemplated, and its manner of use, is the sole responsibility of the user. Printed in the U.S.A.



Index Property	Test Method	Typical	
Thickness	ASTM D6525	0.28 in.	(7 mm)
Mass/Unit Area	ASTM D6566	9.0 oz/sy	(300 g/sm)
Tensile Strength – MD	ASTM D6818	210 lbs/ft	(3.1 kN/m)
Tensile Strength – TD	ASTM D6818	190 lbs/ft	(2.8 kN/m)
Elongation - MD	ASTM D6818	15%	
Elongation – TD	ASTM D6818	15%	
Density/Specific Gravity	D792	N/A	
Light Penetration	ASTM D6567	15%	
Biomass Improvement	ASTM D7322	500%	
Water Absorption	ASTM D1117	300%	

Design Parameters		
Property	Unvegetated	Vegetated <sup>3</sup>
RUSLE C Factor <sup>2</sup>	0.02	N/A
Slope Maximum Gradient <sup>1</sup>	1H:1V	N/A
Permissible Shear Stress <sup>2</sup>	2.5 pfs (120 Pa)	N/A
Permissible Velocity <sup>2</sup>	9.0 fps (2.7 m/s)	N/A

Manning's n Roughness (HEC-15)		
$\tau_{lower}$	$\tau_{mid}$	$\tau_{upper}$
0.023	0.025	0.029

1 Maximum Gradient a recommendation for typical insllations.

2 Hydraulic thresholds compliant with ASTM D6459/D6460 but generalized for typical applications.

3 Vegetated values dependent on established stand of vegetation

Rev. 4.2023

Scan for additional and updated product information,  
or [click here](#).



**West End Beach Parking Lot Repair and MDNR Grant Bathroom Project TF-22-0162**

The undersigned bidder, having carefully examined the local conditions affecting the cost of the work and with the specifications, contract documents and any other applicable information, hereby proposes to perform everything required to be performed and to provide and furnish all labor, materials, necessary tools, equipment and all utility and transportation services necessary to perform and complete this project in a workmanlike manner in accordance with the plans and the work description.

Bidder submits this bid and agrees to meet or exceed all of the City of Traverse City's requirements and specifications unless otherwise indicated in writing and attached hereto.

Bidder certifies that as of the date of this bid, Bidder's company or Bidder is not in arrear to the City of Traverse City for debt or contract and is in no way a defaulter as provided in Section 152, Chapter XVI of the Charter of the City of Traverse City.

Bidder understands and agrees, if selected as successful bidder, to enter with the City into the contract included with the specifications.

Bidder understands that the City reserves the right to accept any or all bids in whole or in part and to waive irregularities in any bid in the best interest of the City of Traverse City. The bids will be evaluated and awarded on the basis of the best value to the City. Criteria used will include, but not be limited to, price, accessories, options and overall capability meeting the needs of the City.

Bidder agrees that the bid may not be withdrawn for a period of sixty (60) days from the actual date of the opening of the bid.

The prices shown in this bid reflect a specified completion date of **June 20, 2025** starting from the date specified in the "Notice to Proceed". The Bidder shall be responsible for liquidated damages for each day after the **June 20, 2025** specified in the Notice to Proceed based on the table below. It is the intent of the City to have this project substantially completed by **June 20, 2025**.

Liquidated Damages will be assessed per MDOT Section 108.10, Table 108-1 for project delays.

**Table 108-1: Schedule of Liquidated Damages  
for Department Oversight**

Original Contract Amount		Amount per Calendar Day
From More Than	To and Including	
\$0	\$100,000	\$500
\$100,000	\$500,000	\$800
\$500,000	\$1,000,000	\$1,000
\$1,000,000	\$5,000,000	\$1,500
\$5,000,000	\$15,000,000	\$2,000
Over \$15,000,000		\$4,000



**Location #1: West End Beach (716 W. Grandview Parkway)**

Item No	Est Qty	Unit	Description of Items	Unit Price	Total Price
100	1	Lsum	Mobilization / Traffic Control		
101	1	Ea	Dr Structure, Rem		
102	1250	Syd	Pavt, Rem, Modified		
103	180	Cyd	Non Haz Contaminated Material Handling and Disposal, LM		
104	250	Cyd	Excavation, Earth, Special		
105	120	Cyd	Embankment, LM		
106	15	Cyd	Granular Material, Cl II		
107	420	Ft	Erosion Control, Silt Fence		
108	1	Ea	Erosion Control, Inlet Protection, Fabric Drop		
109	1	Lsum	Project Cleanup, Modified		
110	1	Ea	Gravel Foundation and Facility Coordination		
111	33	Cyd	Aggregate Base, LM		
112	1125	Syd	Aggregate Base, 8 inch		
113	1	Ea	Sewer Tap, 12 inch		
114	40	Ft	Sewer, CL E, 12 inch, Tr Det A1		
115	40	Ft	Dewatering System, Trench		
116	1	Ea	Dr Structure, 48 inch dia (w/ 3' Sump)		
117	1	Ea	Dr Structure Cover, Adj, Case 1		
118	105	Ton	HMA, 4EL Levelling (165#/SYD)		
119	105	Ton	HMA, 4EL Top (165#/SYD)		
120	1	Ea	Maintaining Water Sprinkler System		

121	25	Ft	Rain Gutter		
122	1	Ea	Rain Gutter Downspout		
123	266	Ft	Curb and Gutter, Conc, with GFRP Reinf, Det C4		
124	55	Ft	Curb Ramp Opening, Conc		
125	1070	Sft	Sidewalk, Conc, 6 inch		
126	9	Cyd	Shared use Aggregate, LM		
127	35	Ft	Shared use Path, Grading		
128	4	Ton	Shared use Path, HMA (4EL Leveling 165#.SYD)		
129	4	Ton	Shared use Path, HMA (4EL Top 165#.SYD)		
130	70	Ft	Post, Steel, 3 lb (14 foot)		
131	9.50	Sft	Sign, Type IIIA		
132	180	Ft	Pavt Mrkg, Waterborne, for Rest Areas, Parks, & Lots, 4 inch, White		
133	292	Ft	Pavt Mrkg, Waterborne, for Rest Areas, Parks, & Lots, 4 inch, Yellow		
134	312	Ft	Pavt Mrkg, Waterborne, for Rest Areas, Parks, & Lots, 4 inch, Blue		
135	4	Ea	Pavt Mrkg, Waterborne, Accessible Sym		
136	1	Lsum	Riprap, Salvage and Replace		
137	150	Syd	Riprap, Spec, CL II		
138	25	Ft	Quarried Rock Steps		
139	380	Syd	Dune Grass Planting		
140	145	Syd	Granular Material, Beach Sand, 8 inch		
141	380	Syd	Mulch Blanket, Modified		
142	160	Syd	Topsoil Surface, Furn, 6 inch		

143	6	Lb	Fertilizer, Chemical Nutrient, Cl A		
144	6	Lb	Seeding, Mixture TUF		
145	160	Syd	Mulch		
146	160	Syd	Mulch Anchoring		
147	1	Ea	Power Service		
148	1	Ea	Water Service		
149	1	Lsum	Contractor Staking		
150	10	Hr	Staking Plan Errors and Extras, Max \$180/hour		
151	1	Ea	Sanitary Sewer Service		

**Total Bid for Location #1, items 100 through 151, inclusive**

\$ \_\_\_\_\_

**DOLLARS**

(write in amount)

**Location #2: Lot RB (740 W. Grandview Parkway)**

Item No.	Est Qty	Unit	Description of Items	Unit Price	Total Price
200	1	Lsum	Mobilization / Traffic Control		
201	60	Ft	Curb and Gutter, Rem		
202	17	Syd	Sidewalk, Rem		
203	253	Syd	Pavt, Rem, Modified		
204	72	Cyd	Non Haz Contaminated Material Handling and Disposal, LM		

205	30	Cyd	Excavation, Earth, Special		
206	20	Cyd	Embankment, LM		
207	115	Ft	Erosion Control, Silt Fence		
208	1	Lsum	Project Cleanup, Modified		
209	1	Ea	Gravel Foundation and Facility Coordination		
210	185	Syd	Aggregate Base, 8 inch		
211	23	Ton	HMA, 4EL Levelling (165#/SYD)		
212	23	Ton	HMA, 4EL Top (165#/SYD)		
213	1	Ea	Abandon Monitoring Well		
214	1	Ea	Maintaining Water Sprinkler System		
215	19	Ft	Rain Gutter		
216	1	Ea	Rain Gutter Downspout		
217	58	Ft	Curb and Gutter, Conc, with GFRP Reinf, Det C4		
218	515	Sft	Sidewalk, Conc, 6 inch		
219	20	Cyd	Shared use Aggregate, LM		
220	80	Ft	Shared use Path, Grading		
221	8	Ton	Shared use Path, HMA (4EL Leveling 165#.SYD)		
222	8	Ton	Shared use Path, HMA (4EL Top 165#.SYD)		
223	105	Ft	Pavt Mrkg, Waterborne, for Rest Areas, Parks, & Lots, 4 inch, Yellow		
224	252	Syd	Topsoil Surface, Furn, 6 inch		
225	10	Lb	Fertilizer, Chemical Nutrient, Cl A		
226	10	Lb	Seeding, Mixture TUF		
227	252	Syd	Mulch		

228	252	Syd	Mulch Anchoring		
229	1	Ea	Power Service		
230	1	Ea	Water Service		
231	1	Lsum	Contractor Staking		
232	8	Hr	Staking Plan Errors and Extras, Max \$180/hour		
233	1	Ea	Sanitary Sewer Service		

**Total Bid for Location #2, items 200 through 233, inclusive**

\$ \_\_\_\_\_

\_\_\_\_\_ **DOLLARS**  
(write in amount)

**Total Bid for both Locations, items 100 through 233, inclusive**

\$ \_\_\_\_\_

\_\_\_\_\_ **DOLLARS**  
(write in amount)

Accompanying this bid is a certified check, bank draft or a bid bond in the amount of five percent (5%) of the total bid payable to the City of Traverse City, which it is agreed will be forfeited to said City if the undersigned fails to enter into the contract specified in the specifications within fourteen (14) days after the contract is awarded to the undersigned.

Bidder guarantees that he or she has authority to submit this bid for the firm named below.

Submitted by:

\_\_\_\_\_  
Signature

\_\_\_\_\_  
Company Name

\_\_\_\_\_  
Name and Title (Print)

\_\_\_\_\_  
Company Address

\_\_\_\_\_  
Phone

\_\_\_\_\_  
City, State, Zip

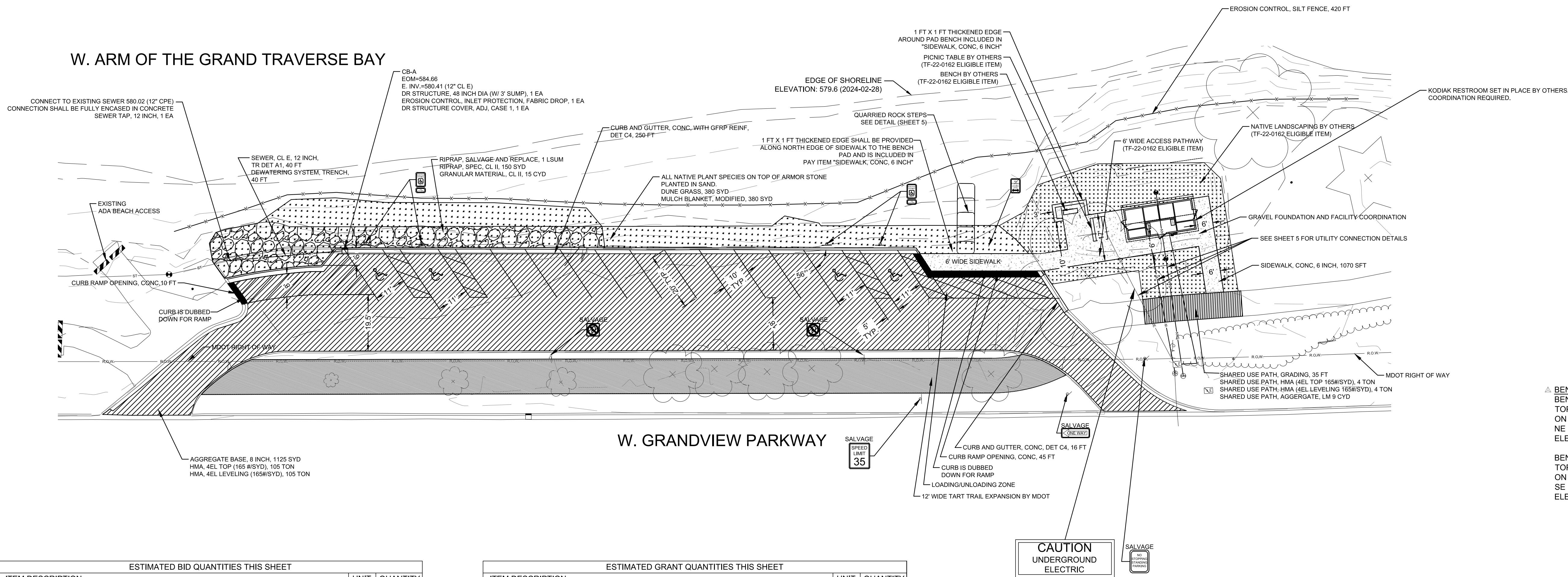
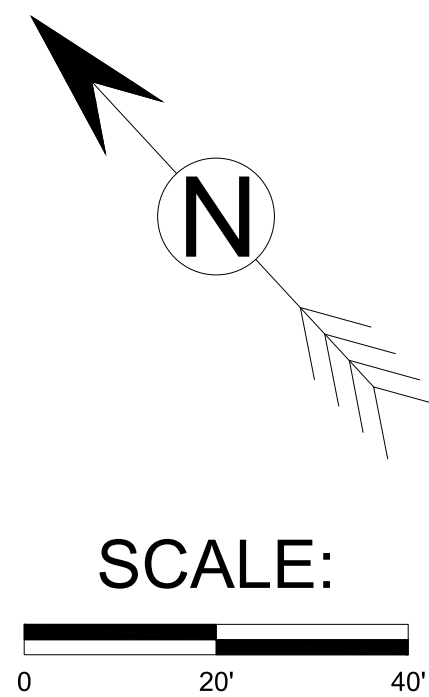
---

Email Address



The City of Traverse City  
Engineering Department  
GOVERNMENTAL CENTER  
400 Boardman Avenue  
Traverse City, Michigan 49604

CITY OF TRAVERSE CITY  
WEST END BEACH PARKING LOT REPAIR AND BATHROOMS PROJECT  
WEST END BEACH CONSTRUCTION SHEET



△ BENCHMARK DATA  
BENCHMARK # 1  
TOP OF 'A' IN 'TRAVERSE CITY'  
ON HYDRANT WHYD-13  
NE COR. OF BAY AND DIVISION  
ELEV. = 589.32 (NAVD88)  
  
BENCHMARK # 2  
TOP OF 'A' IN 'TRAVERSE CITY'  
ON HYDRANT WHYD-16  
SE COR. OF BAY AND CEDAR  
ELEV. = 588.66 (NAVD88)

ESTIMATED BID QUANTITIES THIS SHEET		
ITEM DESCRIPTION	UNIT	QUANTITY
MOBILIZATION/TRAFFIC CONTROL	LSUM	1
EROSION CONTROL, SILT FENCE	FT	420
EROSION CONTROL, INLET PROTECTION, FABRIC DROP	EA	1
AGGREGATE BASE, LM	CYD	33
AGGREGATE BASE, 8 INCH	SYD	1125
SEWER TAP, 12 INCH	EA	1
SEWER, CL E, 12 INCH, TR DET A1	FT	40
DEWATERING SYSTEM, TRENCH	FT	40
DR STRUCTURE, 48 INCH DIA (W/ 3' SUMP)	EA	1
DR STRUCTURE COVER, ADJ, CASE 1	EA	1
HMA, 4EL TOP (165 #/SYD)	TON	105
HMA, 4EL LEVELING (165#/SYD)	TON	105
MAINTAINING WATER SPRINKLER SYSTEM	EA	1
CURB AND GUTTER, CONC, WITH GFRP REINF, DET C4	FT	266
CURB RAMP OPENING, CONC	FT	55
POST, STEEL, 3 LB (14 FOOT)	FT	56
SIGN, TYPE IIIA	SFT	9.5
PAVT MRKG, WATERBORNE, FOR REST AREAS, PARKS, AND LOTS, 4 INCH, WHITE	FT	180
PAVT MRKG, WATERBORNE, FOR REST AREAS, PARKS, AND LOTS, 4 INCH, YELLOW	FT	292
PAVT MRKG, WATERBORNE, FOR REST AREAS, PARKS, AND LOTS, 4 INCH, BLUE	FT	312
PAVT MRKG, WATERBORNE, ACCESSIBLE SYM	EA	4
RIPRAP, SALVAGE AND REPLACE	LSUM	1
RIPRAP, SPEC, CL II	SYD	150
QUARRIED ROCK STEPS	FT	25
DUNE GRASS PLANTING	SYD	380
GRANULAR MATERIAL, BEACH SAND, 8 INCH	SYD	145
MULCH BLANKET, MODIFIED	SYD	380

ESTIMATED GRANT QUANTITIES THIS SHEET		
ITEM DESCRIPTION	UNIT	QUANTITY
GRAVEL FOUNDATION AND FACILITY COORDINATION	EA	1
SIDEWALK, CONC, 6 INCH	SFT	1070
TOPSOIL SURFACE, FURN, 6 INCH	SYD	160
FERTILIZER, CHEMICAL NUTRIENT, CL A	LB	6
SEEDING, MIXTURE TUF	LB	6
MULCH	SYD	160
MULCH ANCHORING	SYD	160
EMBANKMENT, LM	CYD	120
SHARED USE PATH, GRADING	FT	35
SHARED USE PATH, HMA (4EL TOP 165#/SYD)	TON	4
SHARED USE PATH, HMA (4EL LEVELING 165#/SYD)	TON	4
SHARED USE PATH, AGGREGATE, LM	CYD	9
GRANULAR MATERIAL, CL II	CYD	15

NOTES:

ALL RIPRAP, ROCK, AGGREGATE AND GRANULAR MATERIAL SHALL BE NATURAL MATERIAL IN ACCORDANCE WITH THE SPECIFICATIONS AND SPECIAL PROVISIONS.

GEOTEXTILE SEPARATOR AND MULCH BLANKET SHALL BE ALL NATURAL PRODUCTS IN ACCORDANCE WITH THE SPECIFICATIONS AND SPECIAL PROVISIONS.

CONTRACTOR SHALL REMOVE ALL TEMPORARY SOIL EROSION AND SEDIMENTATION CONTROL MEASURES INCLUDING BUT NOT LIMITED TO SILT FENCE AND INLET PROTECTION PRODUCTS AFTER THE SITE HAS STABILIZED AS DIRECTED BY THE ENGINEER.

ESTIMATED SIGN, TYPE III A QUANTITIES THIS SHEET

SYMBOL	LABEL	DIMENSION	AREA (SFT)	QUANTITY	TOTAL (SFT)
	R7-6	12"x18"	1.5	1	1.5
	R7-8	12"x18"	1.5	4	6
	R7-8aP	12"x6"	.5	4	2
TOTAL				9.5	



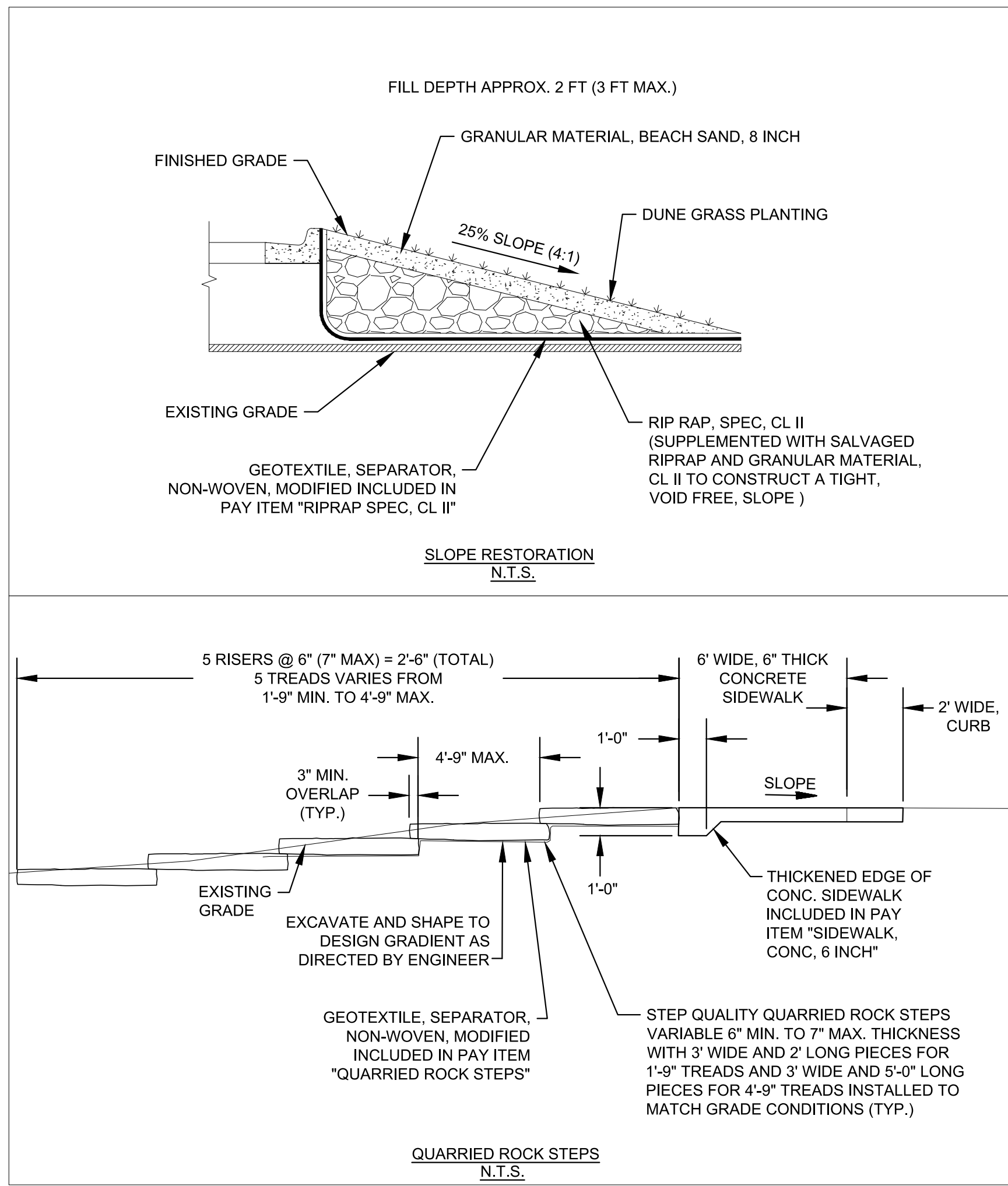
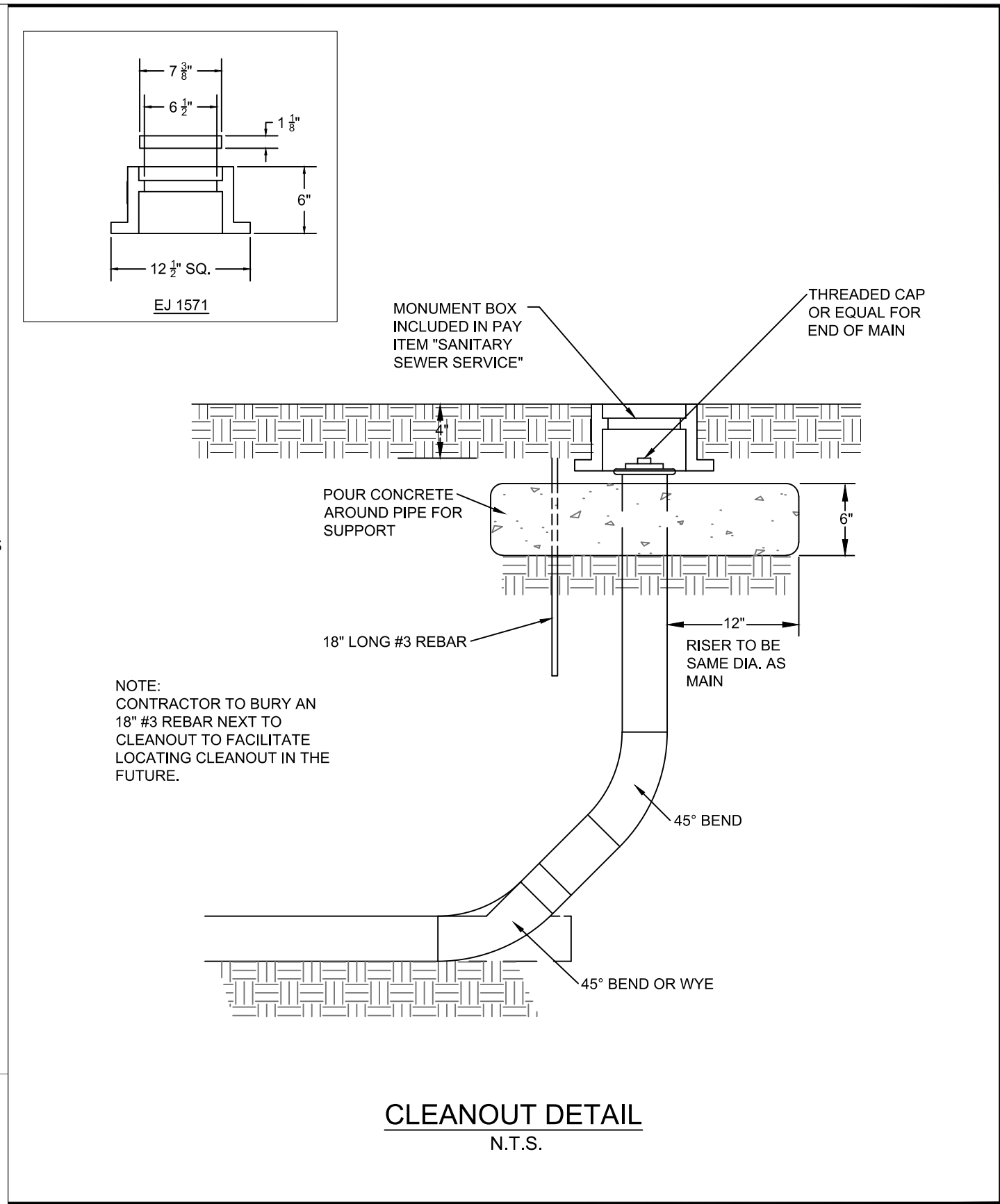
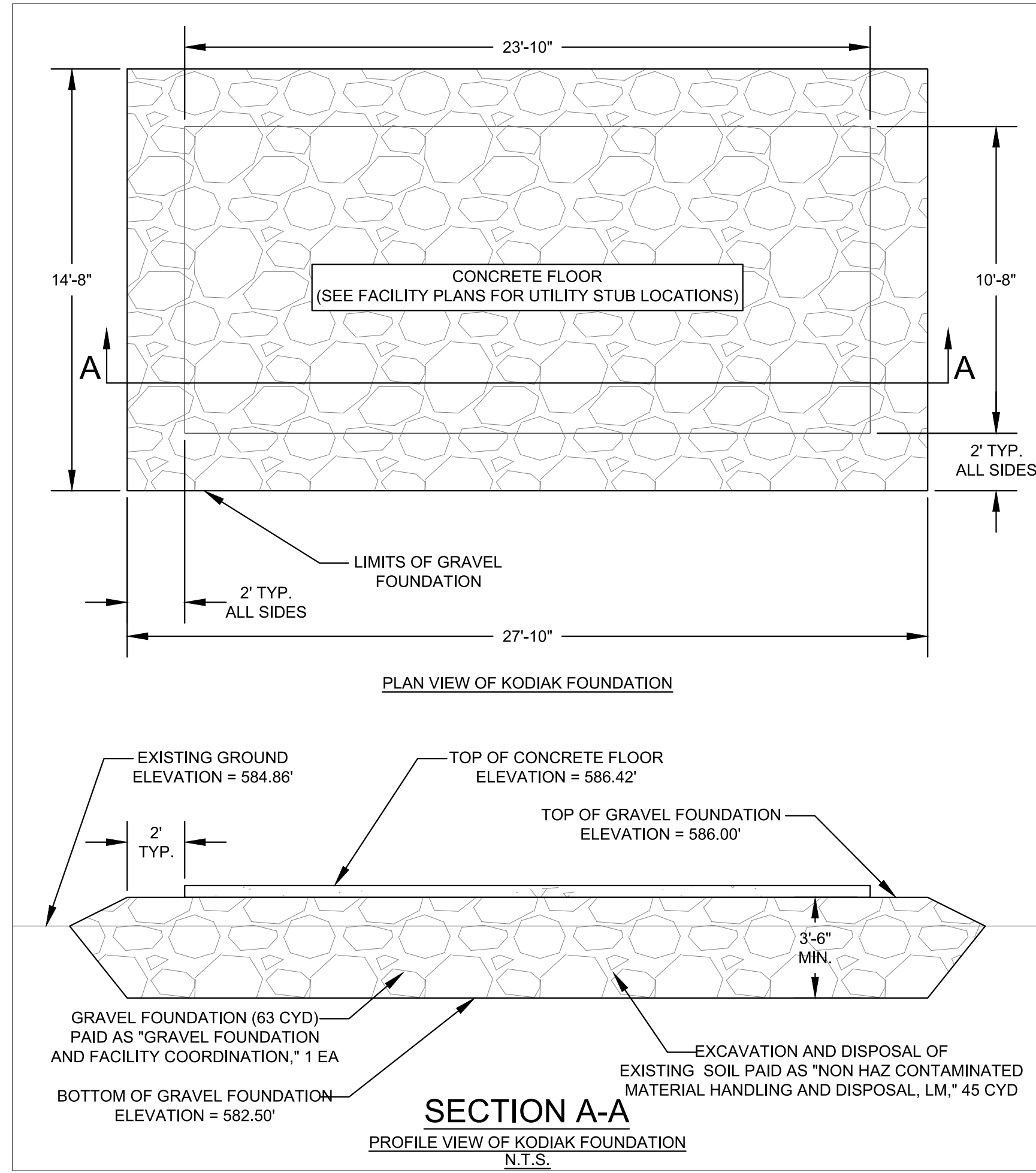
ALL UTILITIES AS SHOWN ARE APPROXIMATE LOCATIONS DERIVED FROM GROUND MEASUREMENTS AND AVAILABLE RECORDS. THEY SHOULD NOT BE INTERPRETED TO BE EXACT LOCATION NOR SHOULD IT BE ASSUMED THAT THEY ARE THE ONLY UTILITIES IN THE AREA.

EXISTING PARKING SPACES = 24 + 1 ADA SPACE  
PROPOSED PARKING SPACES = 10 + 4 ADA SPACES

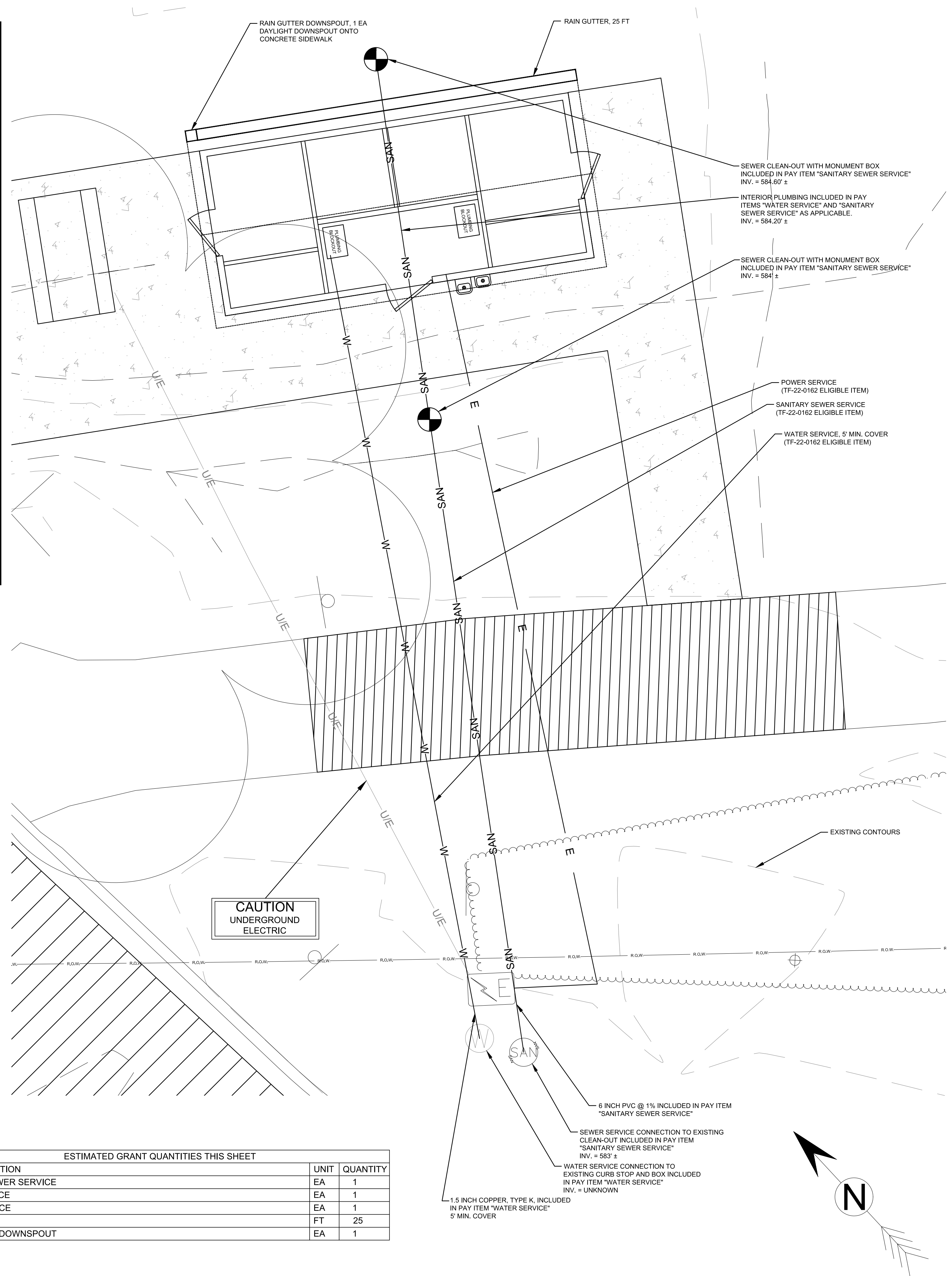
Revision/Issue	Date
REVIEW	7-30-24
ADDENDUM #1	2-13-25

Date:	2025-01-21
Project No.:	2024-003
Drawn by:	JAS
Scale:	1" = 20'
Sheet No.:	3 OF 9





ESTIMATED GRANT QUANTITIES THIS SHEET		
ITEM DESCRIPTION	UNIT	QUANTITY
SANITARY SEWER SERVICE	EA	1
WATER SERVICE	EA	1
POWER SERVICE	EA	1
RAIN GUTTER	FT	25
RAIN GUTTER DOWNSPOUT	EA	1



ALL UTILITIES AS SHOWN ARE APPROXIMATE LOCATIONS DERIVED FROM GROUND MEASUREMENTS AND AVAILABLE RECORDS. THEY SHOULD NOT BE INTERPRETED TO BE EXACT LOCATION NOR SHOULD IT BE ASSUMED THAT THEY ARE THE ONLY UTILITIES IN THE AREA.



The City of Traverse City  
Engineering Department  
GOVERNMENTAL CENTER  
400 Boardman Avenue  
Traverse City, Michigan 49604

# CITY OF TRAVERSE CITY

## WEST END BEACH PARKING LOT REPAIR AND BATHROOMS PROJECT

### WEST END BEACH UTILITY & DETAILS SHEET

Revision/Issue	Date
REVIEW	7-30-24
ADDENDUM #1	2-13-25
Date:	2025-01-21
Project No.:	2024-003
Drawn by:	JAS
Scale:	1" = 20'
Sheet No.:	5 OF 9